

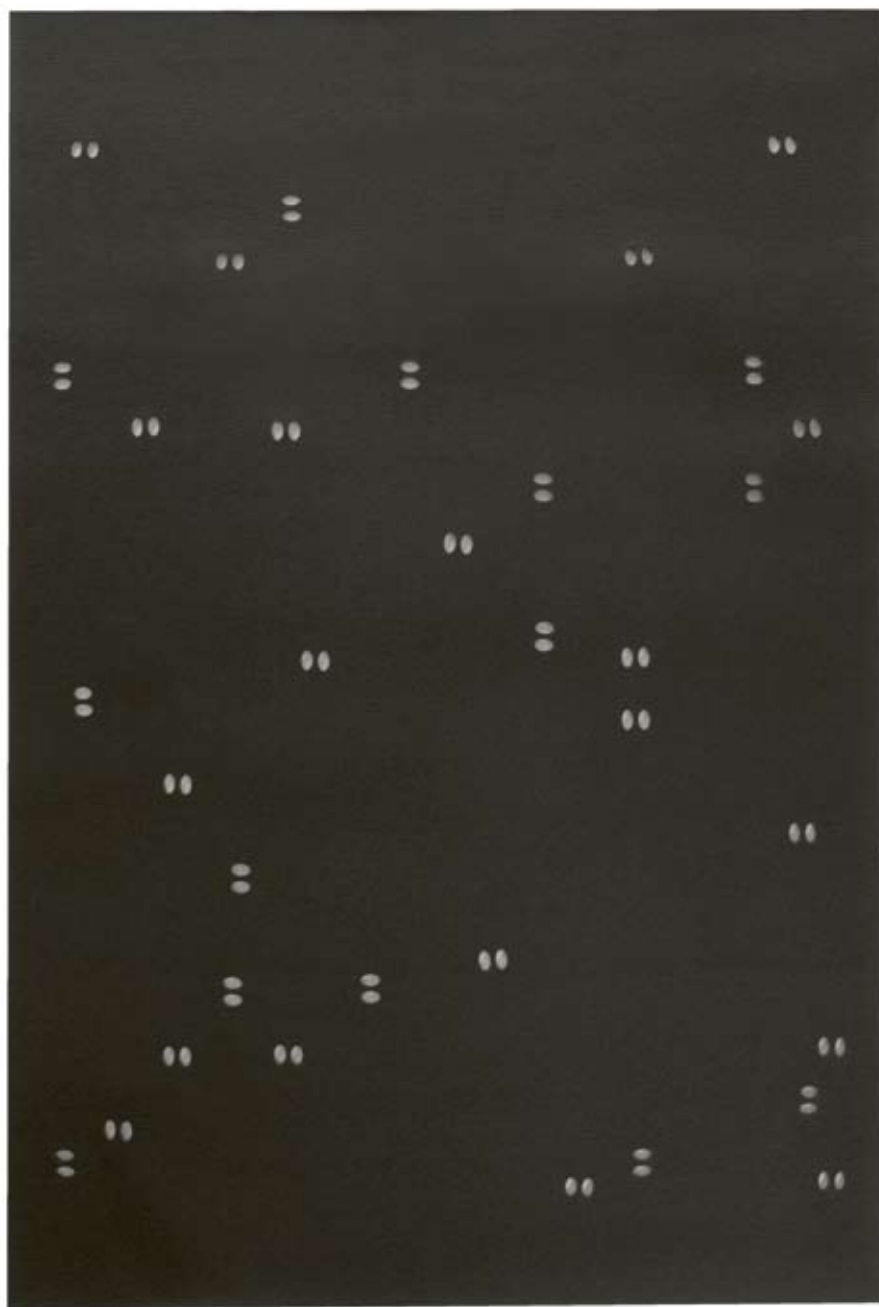


Carpets

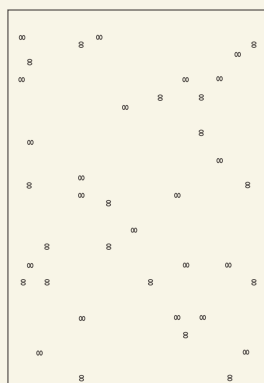
by Verso Design

Polku

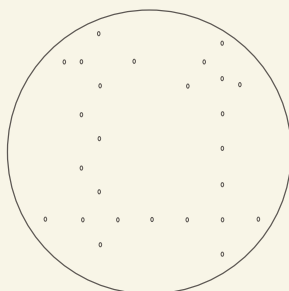
by Elina Keltto and Tuttu Sillanpää



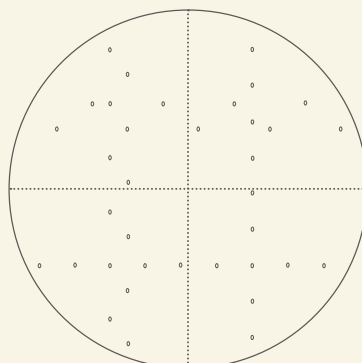
STANDARD SIZES



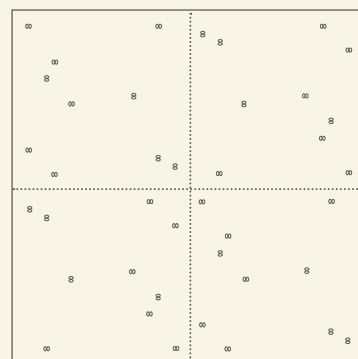
Polku 1
150 x 220 cm



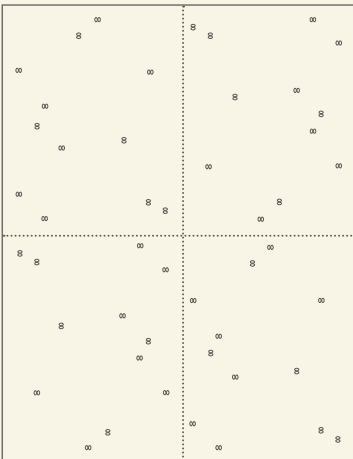
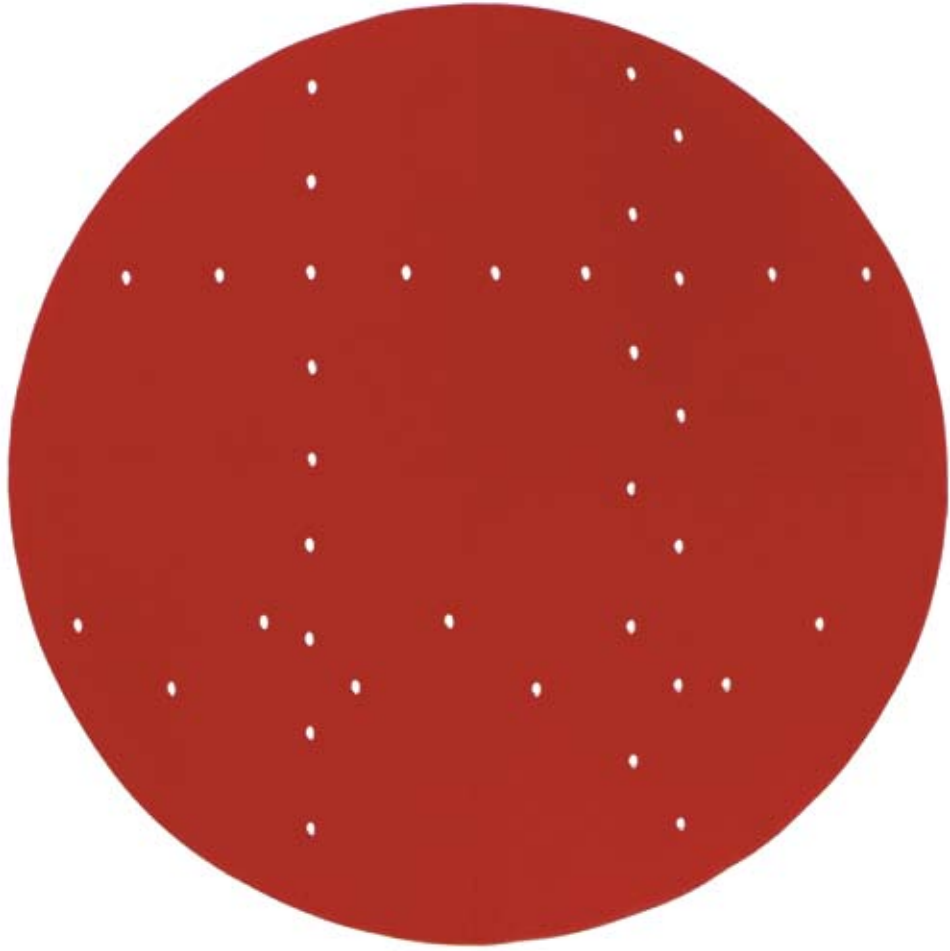
Polku 2
ø 160 cm



Polku 3
ø 200 cm



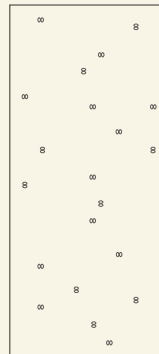
Polku 4
200 x 200 cm



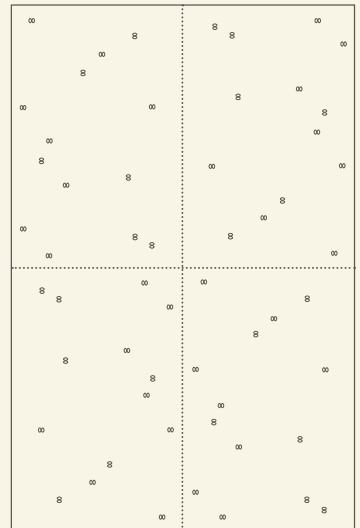
Polku 5
200 x 260 cm



Polku 6
70 x 150 cm



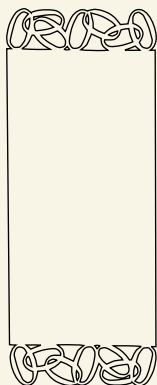
Polku 7
90 x 200 cm



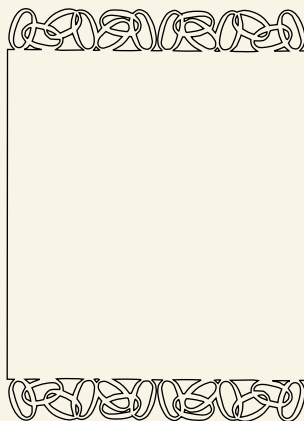
Polku 8
200 x 300 cm

Silmu

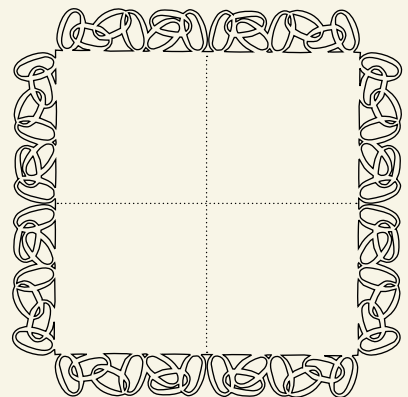
by Tuttu Sillanpää



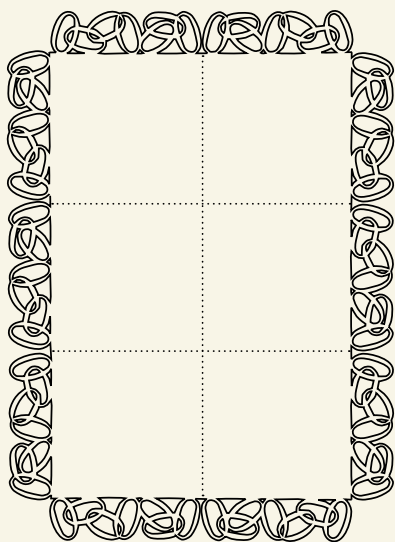
Silmu 1
80 x 200 cm



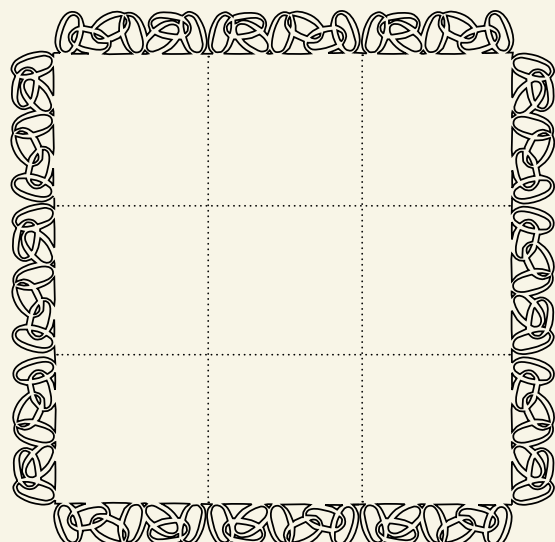
Silmu 2
160 x 220 cm



Silmu 3
204 x 204 cm



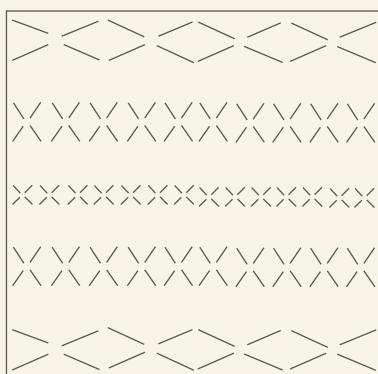
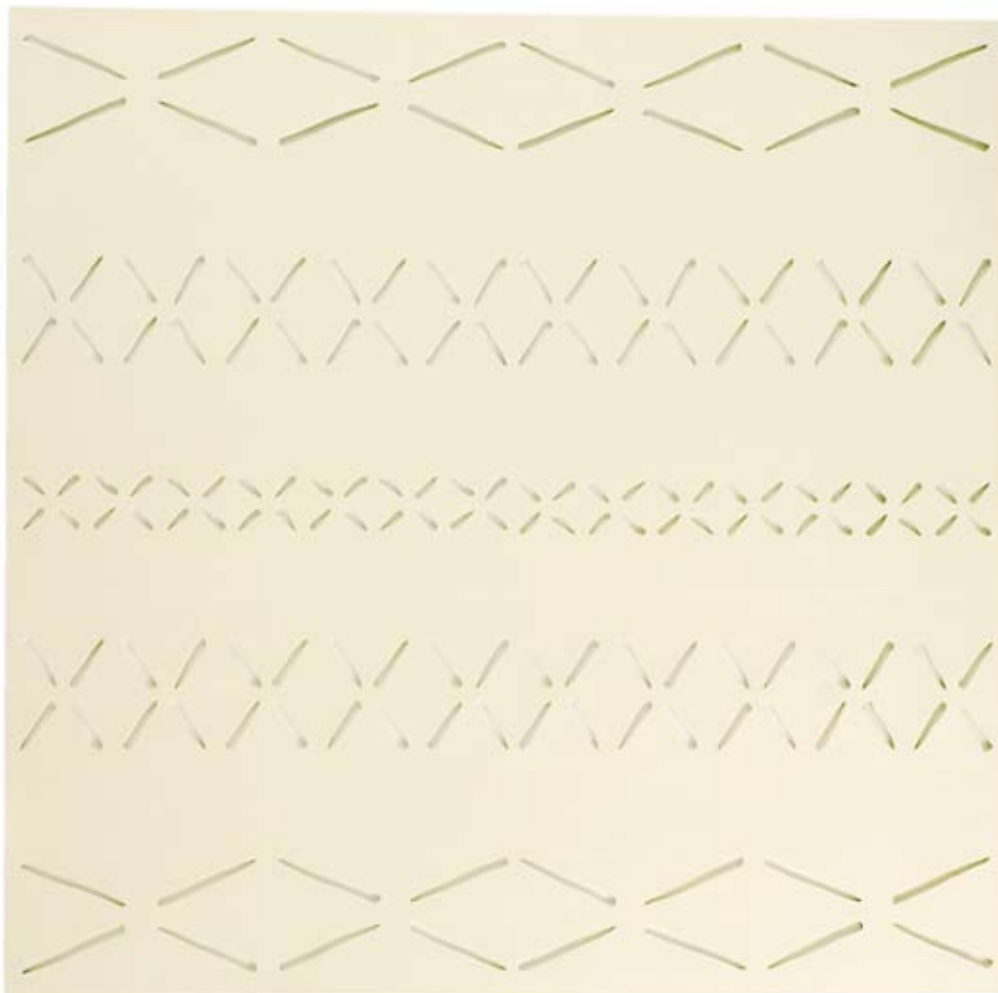
Silmu 4
204 x 284 cm



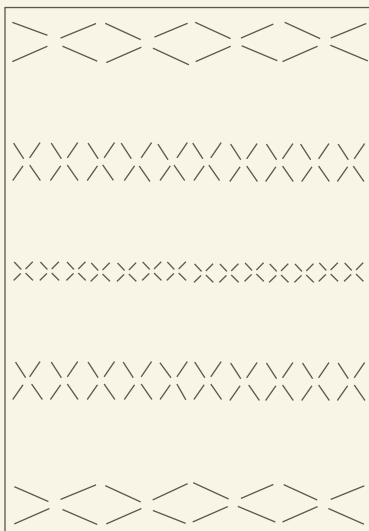
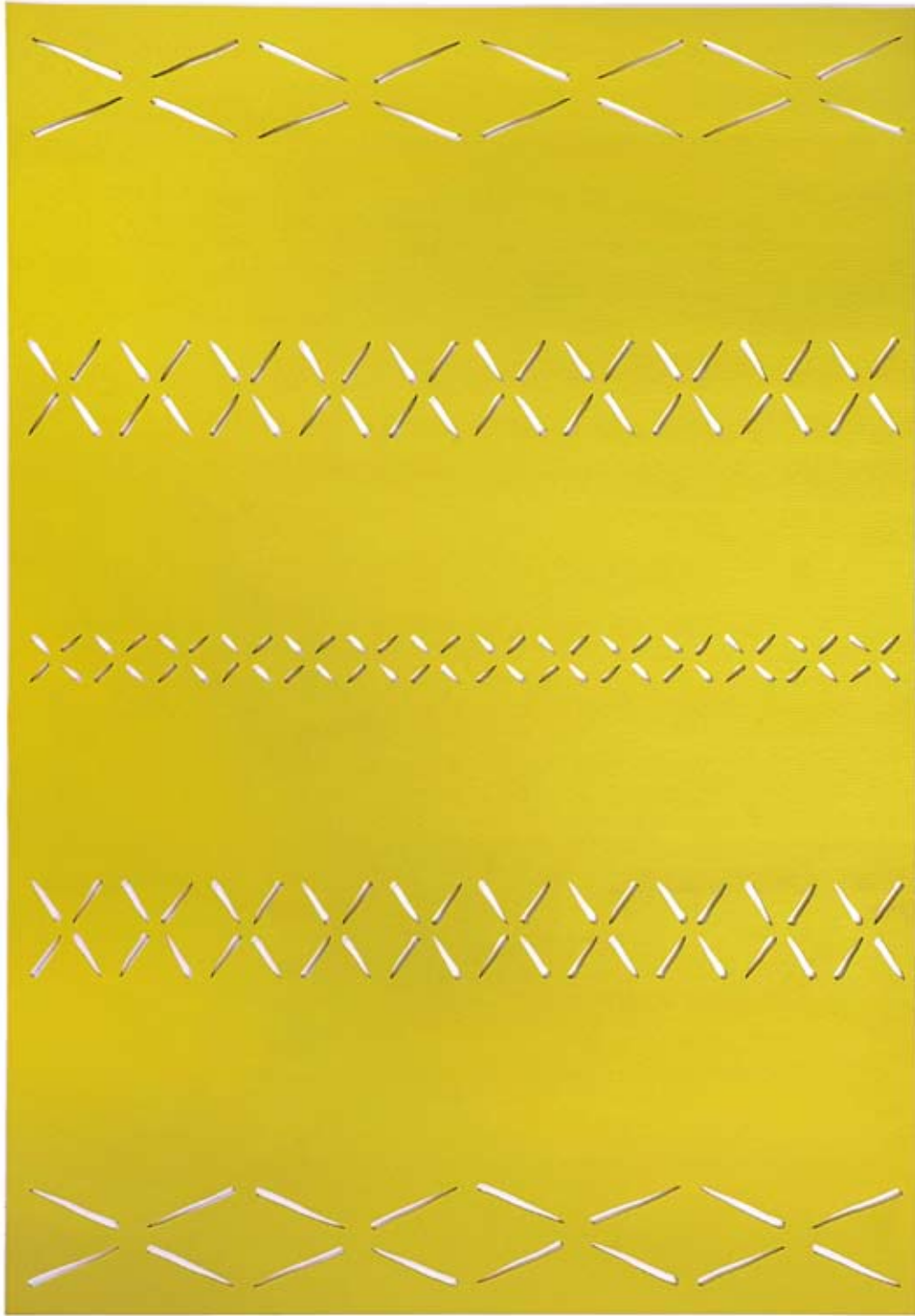
Silmu 5
284 x 284 cm

Kaisla

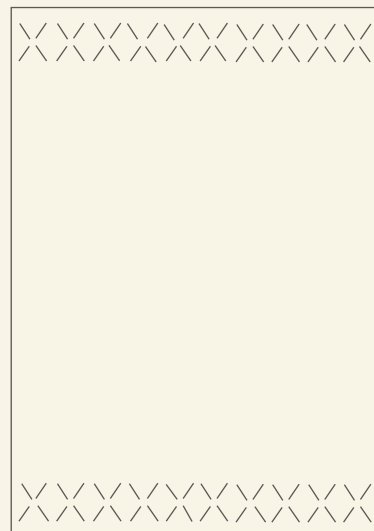
by Tuttu Sillanpää



Kaisla 1 Carpet
160 x 160 cm



Kaisla 2 Carpet
160 x 240 cm



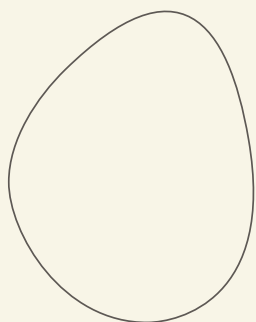
Kaisla 3 Carpet
160 x 240 cm

Kivi

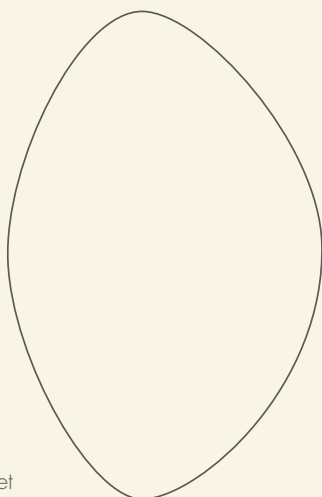
by Tuttu Sillanpää



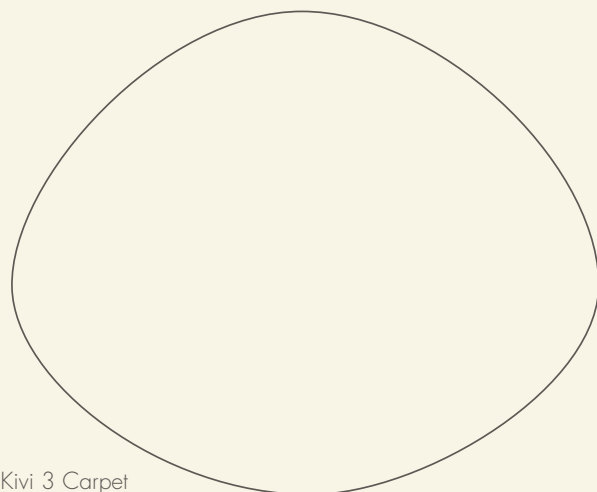
STANDARD SIZES



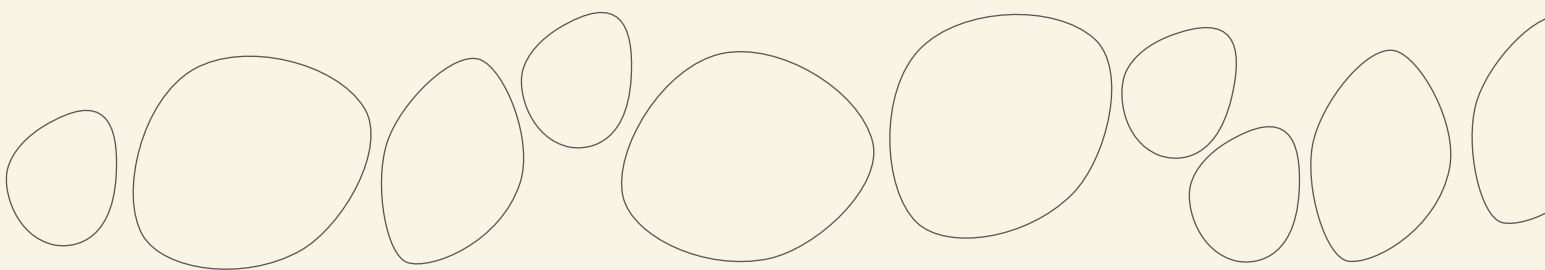
Kivi 1 Carpet
75 x 95 x 0,8 cm



Kivi 2 Carpet
100 x 155 x 0,8 cm



Kivi 3 Carpet
180 x 155 x 0,8 cm



Use Kivi Carpets separate or make a composition.



STANDARD SIZES



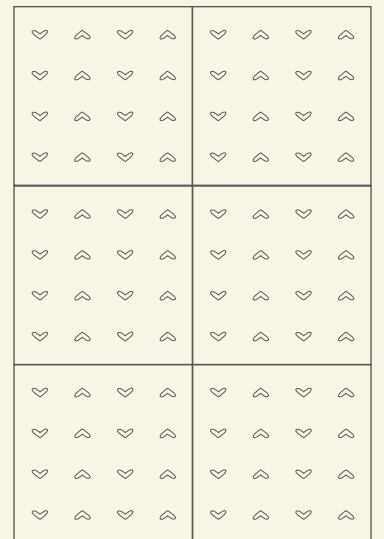
ltu
80 x 80 cm



ltu x 2
160 x 80 cm



ltu x 4
160 x 160 cm

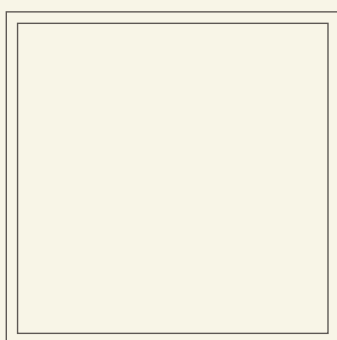


ltu x 6
160 x 240 cm

Itu Wall Element



Itu Wall Element is
500 x 500 mm.



Solid birch frame in the back
is 18 mm wide.



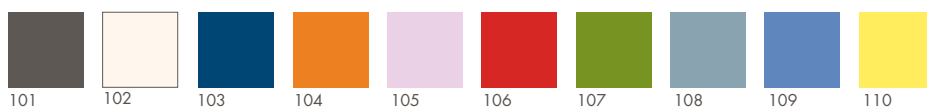
Thickness of
the Itu Wall
Element
is 28 mm
(3 mm wool
felt + 25 mm
frame).



Bigger surfaces can be built by using one
colour or by combining several colours in
the wall elements.



Colours



Verso Carpets

Made in Finland, 100% wool felt

verso
DESIGN

Mäntypaadentie 7 B, FI - 00830 Helsinki
tel +358 9 755 4740 • fax +358 9 755 4750
verso@versodesign.fi • www.versodesign.fi

Specification: Verso carpets are made of 100% wool felt and they have a surface treatment. This finish makes the surface dirt repelling and prevents pilling. Verso Carpets are best suited for home interiors but can also be used in public interiors with slighter wear and tear. In addition to the standard sizes carpets are also available in customized sizes.

Care/Cleaning: Regular vacuum cleaning and airing. Possible stains or fluid split on the carpet should be immediately removed by dry cloth or tissue paper, before absorbed into the carpet. Thereafter the stains can be wiped off by a damp cloth (do not rub). Use water rather than stain removers.

Washing instructions: Use professional carpet cleaners. Professional dry cleaning or flat wash with subsequent pressing through cylinders. Only flat drying. Washing at home is not recommended.